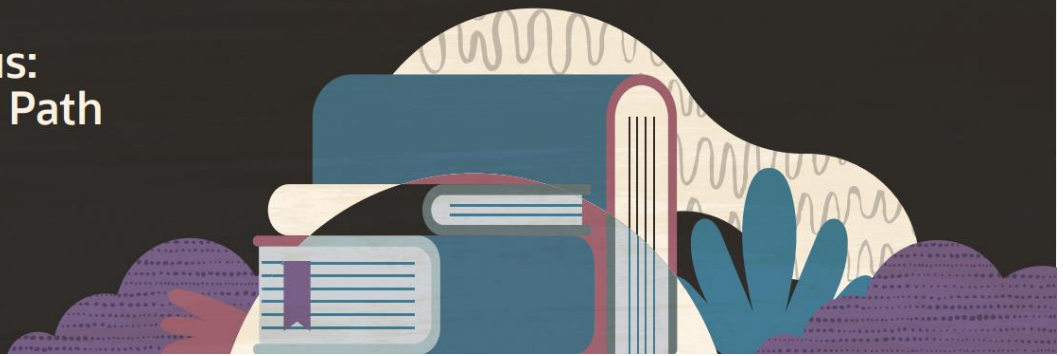


# SuiteLife Campus: The Accelerated Path to Success

ORACLE NETSUITE  
SuiteLife Campus



<b>Course:</b>	SuiteLife Campus				
<b>Language:</b>	English				
<b>Pre-Work</b>	Pre-work for this class must be completed in the two weeks before class – February 10 – February 21, 2025. To access the pre-work in MyLearn, please see the link in your class confirmation email.				
<b>Class Dates and Times:</b>	<p>Monday February 24, 2025, through Friday March 21, 2025            9:00 a.m. – 5:30 p.m. Central Standard Time</p> <ul style="list-style-type: none"> <li>• Class will not meet on February 17, 2025</li> <li>• The typical day is 9am – 3pm facilitated sessions and activities, lunch break</li> <li>• 3:00pm-5:30pm. Offline homework / e-learning / group prep</li> </ul>				
<b>Sample schedule for Delivery Topics:</b>	<b>Pillars</b>	<b>Week 3</b>	<b>Week 4</b>	<b>Week 5</b>	<b>Week 6</b>
	<b>Business Acumen</b>	Accounting 101 Business Processes	Industry Verticals	Transformation	Business Impact
	<b>Business Skills</b>	Credentialing Lead vs Ask Time Management	Client Management Objection Handling Professionalism	Difficult Customers Communication	Project Closure Presentation
	<b>Product</b>	Admin Fundamentals ERP Fundamentals	Business Process Areas Financial Management	Reports & Searches Accounting for NetSuite	Cutover Process Transaction Uploads
	<b>SuiteSuccess</b>	Alignment Sales to PS KT	Bundle Deployment Data Migration	Process Walkthrough Transactions & Cutover	UAT Go Live Delivery
	<b>Activities &amp; Case Study</b>	<b>Teach-back</b> Admin Fundamentals ERP Fundamentals  <b>Group Role Plays</b> Personalization	<b>Case Study</b> Hands-On Configuration	<b>Group Role Plays</b> Process Walkthrough  <b>Teach-back</b> Accounting Impact	<b>Individual Role Plays</b> Design to Build Order to Cash Procure to Pay Record to Report  <b>Final Presentations</b>
<b>Step 1. Pre-work</b>	You must complete the required pre-work in the MyLearn Learning Platform before attending class (refer to your class confirmation email for details).				
<b>Step 2. SuiteLife Campus Entrance Exam</b>	Before attending class, you must take the SuiteLife Campus: Entrance Exam. After you register for this class, you will receive instructions on how to request an exam voucher and how to access the online exam.				

<b>Step 3. Pre-Class Check-in Session</b>	<p>The check in session for the class will happen approximately three weeks before your class. Watch your email for a Zoom invitation.</p> <p><b>It is mandatory that each attendee join a pre-class check-in session</b>, to ensure you are fully prepared for your class. In the session your class facilitators will:</p> <ul style="list-style-type: none"><li>• Review Zoom features that will be used for the class delivery</li><li>• Ensure that you have access to all the resources and tools you will need for the class</li><li>• Answer any questions you may have about the pre-work</li></ul>
<b>Zoom Invitation</b>	<p>Watch your inbox for Zoom invitations:</p> <ul style="list-style-type: none"><li>• Check-in session invitation will be sent three weeks before class.</li><li>• Class invitation will be sent after Check-in session.</li></ul>